

# ***Energizer***<sup>®</sup>

**ENERGI TO GO**<sup>®</sup>

XP1000

**USER'S MANUAL**

[www.xpalpower.com](http://www.xpalpower.com)

**XPAL**<sup>®</sup>  
POWER 



**PLEASE READ THE INFORMATION AND  
FOLLOW ALL INSTRUCTIONS THOROUGHLY  
BEFORE USING THIS PRODUCT.**

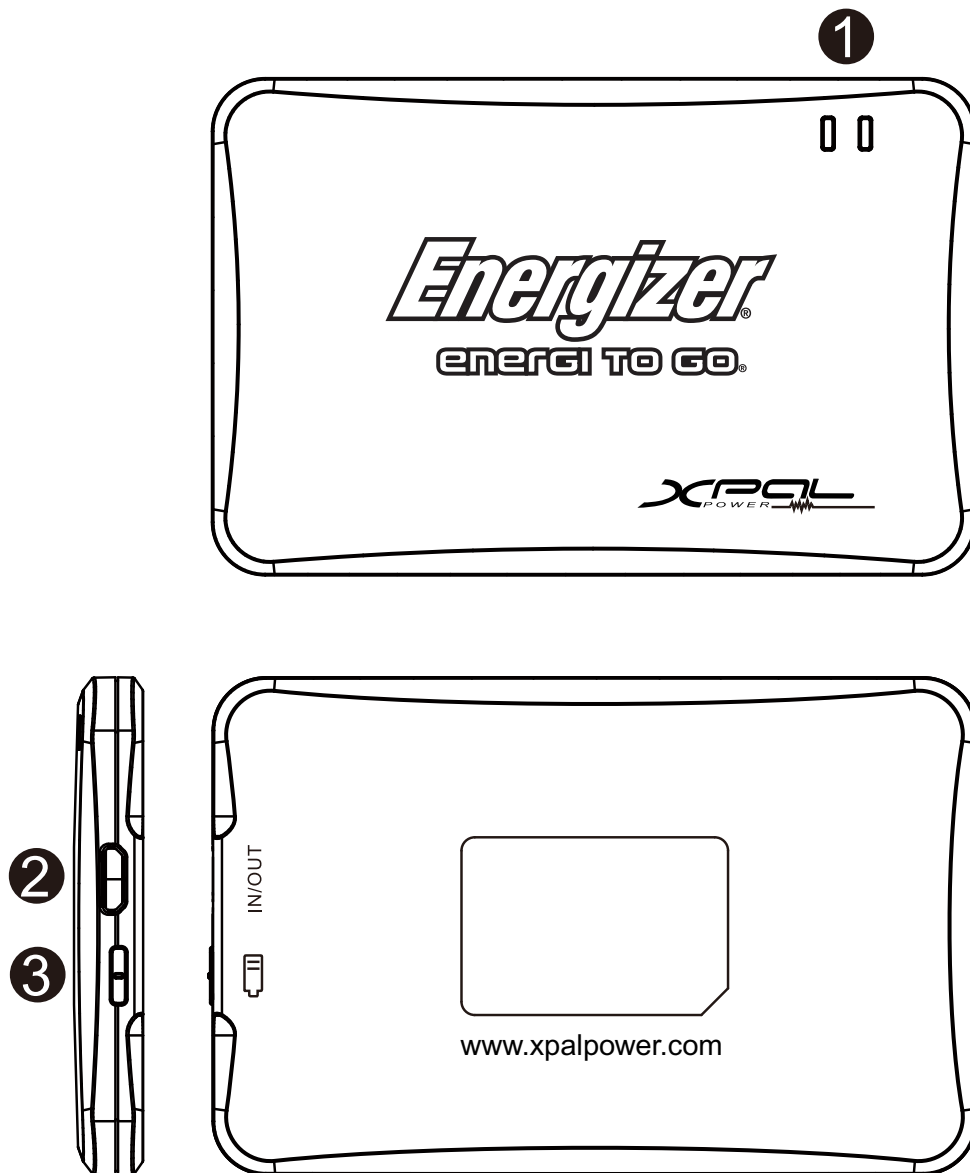
Thank you for purchasing the XP1000. This User's Manual provides operation instructions for the XP1000 which is a rechargeable battery pack with 5V outputs ideal for powering and charging iPod<sup>®</sup>, MP3 players, cell phones and Bluetooth<sup>®</sup> via 5V charging cable. Please remember to register this purchase at [www.xpalpower.com](http://www.xpalpower.com).

# Safety Precautions

Please read the following carefully before using the Product. Incorrect use or incompatibility with your device may result in reduced battery performance or damage to your device.

- Check device voltage for compatibility with this product.
- Do not attempt to disassemble product.
- Store and operate between 32°F-113°F.
- Do not allow this product to have contact with liquids.
- Do not place this product near a heat source or flame or it may explode.
- Do not throw or shake the power pack.
- Do not operate the power pack if it has been subjected to shock or damage.
- Do not crush or puncture the battery.
- Recharge the power pack every 3 months when not in use. Use soft cloth to clean the exterior. Do not use harsh chemicals or strong cleaning solvents.

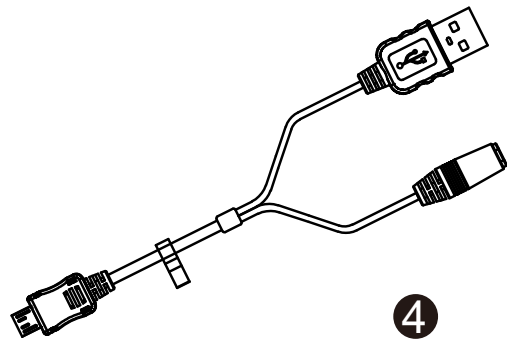
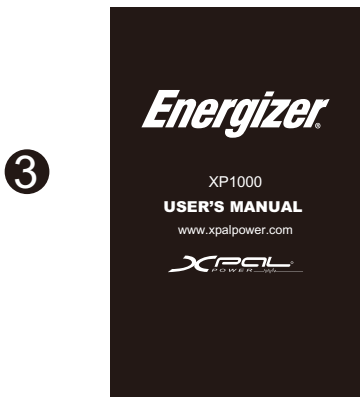
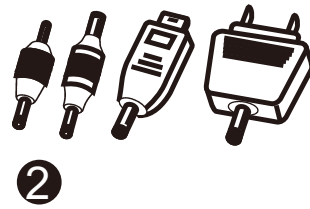
# Product Overview



## Product Overview

1. LED Battery Life Indicator
2. 5V Output Port
3. LED Activation Button

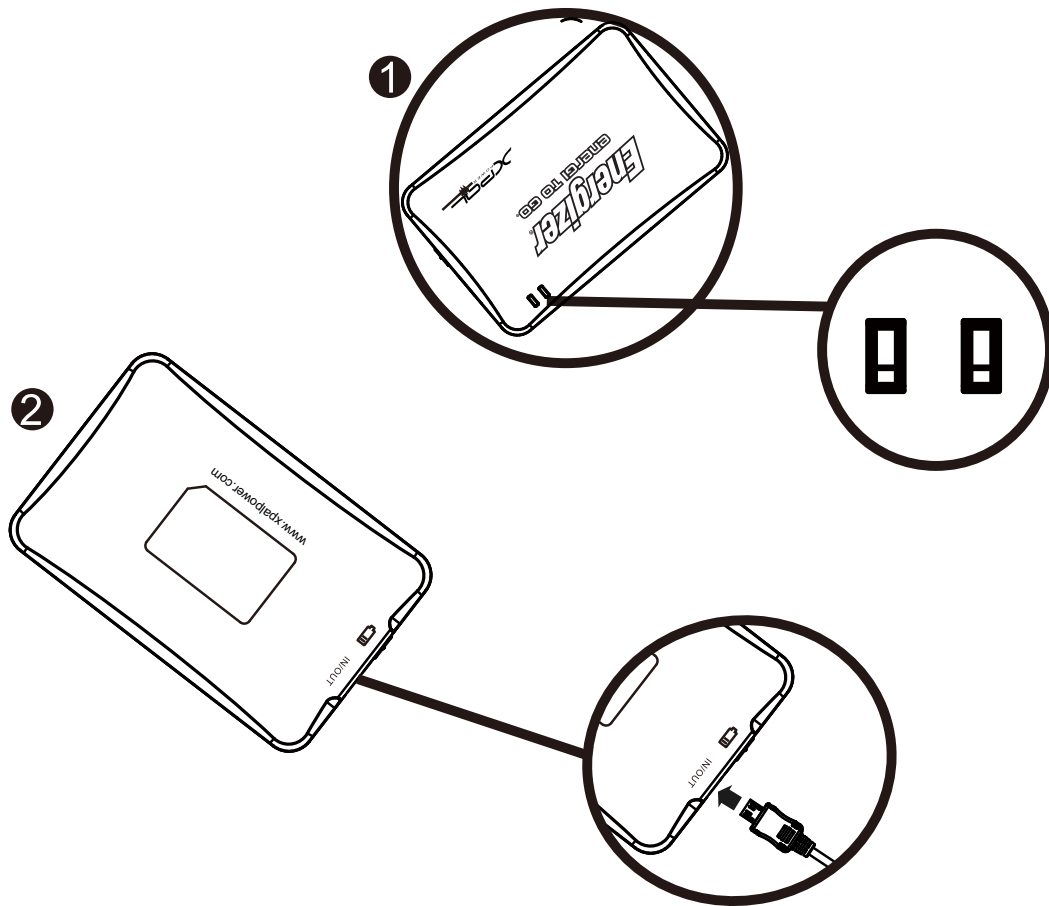
# Package Contents



## Package Contents (May vary in different areas)

1. XP1000
2. Cell Tips
3. User's Manual
4. 5V USB Charging Cable

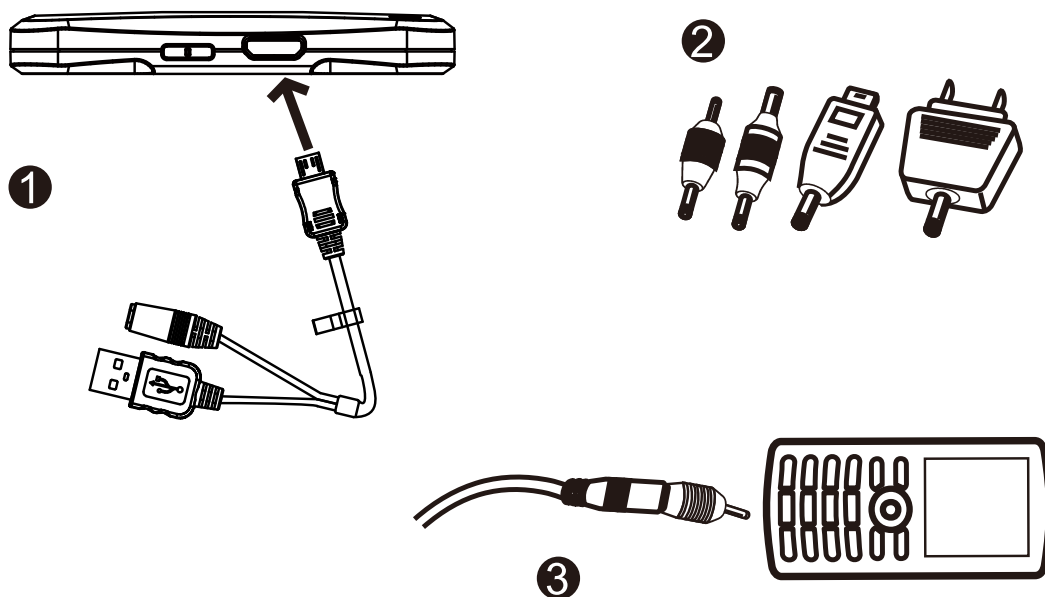
# Charging XP1000



Important: Always Charge your XP1000 product the FIRST time for a full 8 hours before regular use. After the initial charge, normal charging will only take 3-4 hours.

1. When solid green light comes on, your XP1000 is fully charged.
2. Insert the USB tip of the charging cable into the output jack of your notebook or desktop USB port to charge it.

# Charging Devices



## ▶ Supports



Bluetooth



MP3



Mobile Phone

## Charging Devices

Important: Check for voltage compatibility with your device first.

1. Insert charging cable into the 5V (power port) of XP1000.
2. Then choose the suitable tips for your digital device.
3. Then insert the end of charging cable with the proper tip into the charging port of your digital device.

## **TipFit Guarantee and Free Tips for Life**

Thank you for purchasing an XP1000 Power Pack! Please register your purchase online at [www.xpalpower.com](http://www.xpalpower.com) and qualify for Free Tips for Life. You no longer have to worry about finding the right tips for your device – we will do it for you.

Go to [www.xpalpower.com](http://www.xpalpower.com) FREE Tips for Life Program for more promotion details.

- 1.If you did not get the right tips with your purchase, make your selection online.
- 2.Register your Product purchase to qualify for your tips.
- 3.Use the Tip compatibility Chart to select the right tip for your device.
- 4.We will ship your tips within 5 working days. If we don't have the tip you need, we'll find it – guaranteed!

# Trouble Shooting

<b>Problem / Solution</b>
<p><b>No response after device is connected.</b></p> <ul style="list-style-type: none"><li>a.Voltage output from power pack does not match the device. Check device manual for voltage.</li><li>b.Improper connection between power pack and device.</li><li>c.Damaged connecting charging cable or tip.</li></ul>
<p><b>Power pack will not charge.</b></p> <ul style="list-style-type: none"><li>a.Improper connection between charger and power pack .</li><li>b.Wrong input port is being used on power pack product.</li><li>c.AC Plug does not work.</li></ul>
<p><b>Power pack product will not power the device.</b></p> <ul style="list-style-type: none"><li>a.Charge of powerpack product is too low. Recharge power pack.</li><li>b.Short Circuit of power pack product. Reset power pack.</li><li>c.Circuit problem with power pack product. Contact seller.</li></ul>

## **Recycling / Discarding**

The XP1000 power pack should be disposed of properly. Please do not dispose in trash receptacles or incinerate. For information about XPAL's battery recycling promotion, visit: [www.xpalpower.com](http://www.xpalpower.com)

# **XPAL Warranty**

## **XPAL 3 Year Limited Warranty**

XPAL Power's warranty obligations for XPAL products are limited to the terms set forth below: XPAL Power, Inc. ("XP") warrants XPAL product against defects in materials and workmanship for a period of 3 years from the date of original purchase ("Warranty Period"). All products must be registered online within 90 days from the date of purchase to qualify for the 3 year warranty. If a defect arises and a valid claim is received by XP within the Warranty Period, at its option, XP will (1) repair the product at no charge, using new or refurbished replacement parts, (2) exchange the product with a product that is new or which has been manufactured from new or serviceable used parts and is at least functionally equivalent to the original product, or (3) refund the purchase price of the product. If a defect arises and a valid claim is received by XP after the Warranty Period, a shipping and handling charge will apply to any repair or exchange of the product undertaken by XP. When a product or part is exchanged, any replacement item becomes your property and the replaced item becomes XP's property. When a refund is given, your product becomes XP's property.

## **EXCLUSIONS AND LIMITATIONS**

XP warrants the internal battery cell of the power pack for 6 months periods. If the battery cell exceeds 6 months, the battery cell will not be warranted and the customer will be responsible for shipping and battery re-cycling charges.

XP is not liable for any damage or your portable device or loss of any programs, data, or other information stored on any media contained within your device or any non-XP product or part not covered by this warranty. Recovery or reinstallation of programs, data or other information is not covered under this Limited Warranty. This warranty does not apply:

(a) to damage caused by accident, abuse, misuse, misapplication, or non-XP products; (b) to damage caused by service performed by anyone other than XP; (c) to a product or a part that has been modified without the written permission of XP; or (d) if any XP serial number has been removed or defaced.

TO THE MAXIMUM EXTENT PERMITTED BY LAW, THIS WARRANTY AND THE REMEDIES SET FORTH ABOVE ARE EXCLUSIVE AND IN LIEU OF ALL OTHER WARRANTIES, REMEDIES AND CONDITIONS, WHETHER ORAL OR WRITTEN, EXPRESS OR IMPLIED. EXP SPECIFICALLY DISCLAIMS ANY AND ALL IMPLIED WARRANTIES, INCLUDING, WITHOUT LIMITATION, WARRANTIES OF MERCHANTABILITY AND FITNESS FOR A PARTICULAR PURPOSE. IF EXP CANNOT LAWFULLY DISCLAIM OR EXCLUDE IMPLIED WARRANTIES UNDER APPLICABLE LAW, THEN TO THE EXTENT POSSIBLE ANY CLAIMS UNDER SUCH IMPLIED WARRANTIES SHALL EXPIRE ON EXPIRATION OF THE WARRANTY PERIOD. No EXP RESELLER, AGENT, OR EMPLOYEE IS AUTHORIZED TO MAKE ANY MODIFICATION, EXTENSION, OR ADDITION TO THIS WARRANTY. TO THE MAXIMUM EXTENT PERMITTED BY LAW, EXP IS NOT RESPONSIBLE FOR DIRECT, SPECIAL, INCIDENTAL OR CONSEQUENTIAL DAMAGES RESULTING FROM ANY BREACH OF WARRANTY OR CONDITION, OR UNDER ANY OTHER LEGAL THEORY, INCLUDING BUT NOT LIMITED TO, LOST PROFITS, DOWNTIME, GOODWILL, DAMAGE TO OR REPROGRAMMING OR REPRODUCING, ANY PROGRAM OR DATA STORED IN OR USED WITH EXP PRODUCTS.

## **How to get XPAL warranty service:**

1. For information on obtaining warranty service, e-mail XPAL customer service at [service@xpalpower.com](mailto:service@xpalpower.com) or call 209-578-9918.
2. To be eligible for XPAL warranty service, you will be required to provide:
  - The original dated sales receipt
  - Proof of online warranty activation
  - Your name
  - Your address and e-mail
  - A description of the problem.
3. Take or ship the product in the original or a properly padded, protective replacement container to XPAL Power at the below address:  
XPAL Power Replacement Warranty Servicesz  
100 Sycamore Ave #200, Modesto, CA 95354

# ***Energizer***<sup>®</sup>

**ENERGI TO GO**<sup>®</sup>

**XPAL**<sup>®</sup>  
POWER

## **XP1000**

- Battery type: Lithium polymer
- Rated input: DC5V
- Rated output: DC5V--500 mA
- Battery capacity: 1000 mAh
- Recharging time: ~4 hours
- Operating temperature: 32°F-113°F
- Size: 3.33(L)\*2.1(W)\*0.28(H) inches
- Weight: 1.2 oz
- Size: 84(L)\*53(W)\*7(H) mm
- Weight: 36 g

All rights reserved. Reproduction in whole or in part is prohibited without the prior written consent of the copyright owner. The information presented in this document does not form part of any quotation or contract, is believed to be accurate and reliable and may be changed without notice. No liability will be accepted by the publisher for any consequence of its use. Publication there of does not convey nor imply any license under patent- or other industrial or intellectual property rights.

## **Contact Information**

[sales@xpalpower.com](mailto:sales@xpalpower.com)  
[service@xpalpower.com](mailto:service@xpalpower.com)  
[www.xpalpower.com](http://www.xpalpower.com)